

Capitol Supply

★ *We've got that!*



Easy Ordering. Fast Delivery.

We've Got That!TM

L A **Z** B O Y
HOSPITALITY



Capitol Supply, Inc. | 1000 Sawgrass Corporate Parkway, Suite 452
Sunrise, FL 33323 | Toll Free 888.485.5001 | Int'l 954.485.5000
Fax 954.485.0407 | sales@capitolsupply.com | www.capitolsupply.com

Canterbury Square



Shown above:

C840-410
Nightstand
24" w x 18" d x 24" h

C840-312
5/0 Wall Hung
Headboard
63" w x 3" d x 36" h

C840-710
Square Activity Table
30" w x 30" d x 30" h

C840-630
Splat Desk Chair
19" w x 21" d x 37" h

Canterbury Square is a simple, yet elegant collection with a beautiful square moulding motif on many pieces. The look is simple enough to fit many transitional or traditional settings. Heavy bottom base rails add a sense of weight and quality. This collection looks elegant in any of the four finish options that are offered by La-Z-Boy® Hospitality. Canterbury Square will add a sophisticated style to any guest room setting and will provide your property with form and function. We keep Canterbury Square in the finish in our In Stock Program.



C840 Merlot

C841 Huntington Maple

C842 Fusion Maple

C843 Wild Cherry



★ We've got that!

1000 Sawgrass Corporate Parkway, Suite 452 | Sunrise, FL 33323 | www.capitolsupply.com
Toll Free 888.485.5001 | Int'l 954.485.5000 | Fax 954.485.0407 | sales@capitolsupply.com



Brushed Nickel Finish Hardware
and accents



C840-031
Mirror
30" w x 2" d x 41" h



C840-030
Mirror
20" w x 1" d x 60" h



C840-411
Nightstand
24" w x 18" d x 24" h



C840-101
Corner Chest
57" w x 30" d x 36" h



C840-130
Drawer Chest
36" w x 23" d x 36" h



C840-190
Credenza
71" w x 19" d x 24" h



C840-261
Drawer Dresser
65" w x 20" d x 31" h



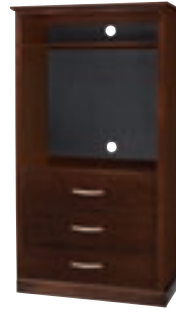
C840-110
Microwave/Refrigerator
Chest RSF Door
58" w x 24" d x 42" h



C840-111
Microwave/Refrigerator
Chest LSF Door
58" w x 24" d x 42" h



C840-112
Media/Refrigerator Chest
55" w x 24" d x 42" h



C840-180
Armoire
36" w x 22" d x 65" h



C840-100
TV Media Chest
36" w x 23" d x 38" h



C840-930
Corner Table
30" w x 30" d x 22" h



C840-915
Rectangular End Table
21" w x 24" d x 24" h



C840-450
Luggage Bench HPL Top
35" w x 22" d x 22" h



C840-910
Cocktail Table
42" w x 20" d x 20" h



C840-710
Square Activity Table
30" w x 30" d x 30" h



C800-930
Corner Table
30" w x 30" d x 22" h



C840-451
Luggage Bench
Upholstered Top
35" w x 22" d x 22" h



C840-602
Drawer Desk
48" w x 30" d x 30" h



C840-601 Desk
48" w x 30" d x 30" h



C840-611
Console
53" w x 14" d x 34" h

Sierra - Task Seating



SESE200 **Sierra**
Mid-Back Chair
Swivel, Adjustable Back Depth
& Seat Height
29" w x 26" d x 41" h

Features

- Stitched Multi-Panel Foam Seat Bottom contours to the body for seating comfort
- Broad Back supports lower back & shoulders
- Waterfall-Front Seat Edge assures comfort and proper circulation
- Brushed Aluminum Base & Arms assures durable attractive finish
- Multi-Panel Contoured Back with Lumbar Support for the lower back

The fundamental task chair with value pricing and options for personal fit. Sierra fits each person perfectly with a variety of comfort options including four arm choices, seat-depth adjustment, lumbar support, back-tilt and pneumatic height control. Sierra is designed to fit any office décor and is available in over 50 great fabric colors. These chairs are ideal for general office staff, computer users, reception. Arm options include no arms, fixed arms, height adjustable arms or height and width adjustable arms. Sierra chairs are constructed with heavy-duty 7-ply plywood backs and bottoms are padded with over 3" of urethane foam.

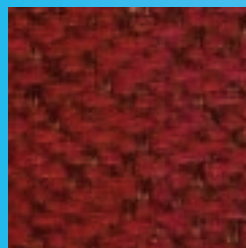
Some Available Fabrics: visit capitolsupply.com for a complete selection



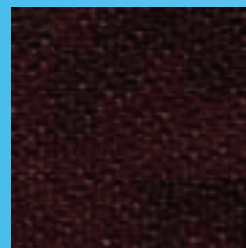
Encore-Oatmeal



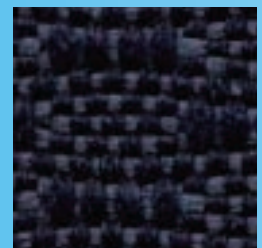
Encore-Lava



Haze-Burgundy



Haze-Black



Classic-Blue



★ We've got that!

1000 Sawgrass Corporate Parkway, Suite 452 | Sunrise, FL 33323 | www.capitolsupply.com
Toll Free 888.485.5001 | Int'l 954.485.5000 | Fax 954.485.0407 | sales@capitolsupply.com

Lamps



Energy Star compliant lamps are increasingly required on many Government projects. Energy Star fluorescent lighting uses 75% less energy and lasts up to ten times longer than normal incandescent lights. Americans, with the help of Energy Star, saved enough energy in 2007 alone to avoid greenhouse gas emissions equivalent to those from 27 million cars - all while saving \$16 billion on their utility bills.



5339TPC-18
 Powdercoated Table Lamp
 Shown in Rust
 25" Tall
 6" w x 16" d x 10 1/2" h Natural
 Mushroom Shade



5338FPC-18
 Powdercoated Floor Lamp
 Shown in Gator Navy
 62" Tall
 6" w x 20" d x 12 1/2" h Light
 Natural Mushroom Shade

Artwork

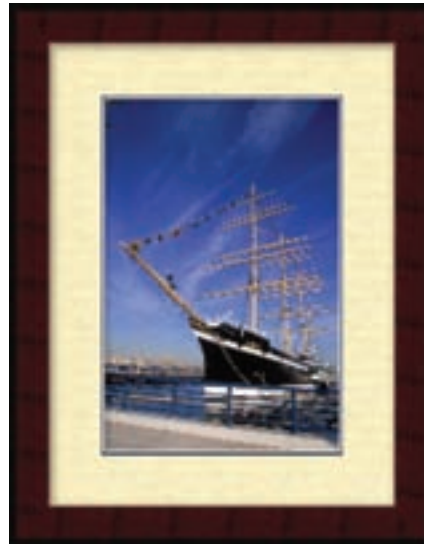


Art evokes emotions, it speaks to the soul. At its best, it inspires, challenges and transforms us. Working together, we design art programs that complete the image as envisioned by the client, architect and our design team.

Color Scheme # 1



Camden Harbor
20" x 16"



Penns Landing
14" x 21"

Color Scheme # 3



Spiral I

Color Scheme # 2 and 4



Palmeras I
18" x 24"



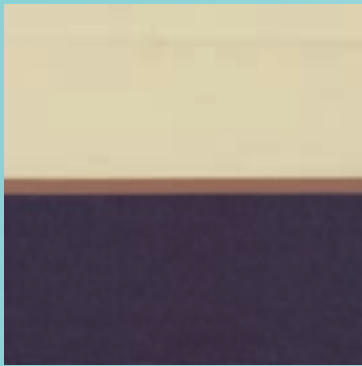
Palmeras II
18" x 24"



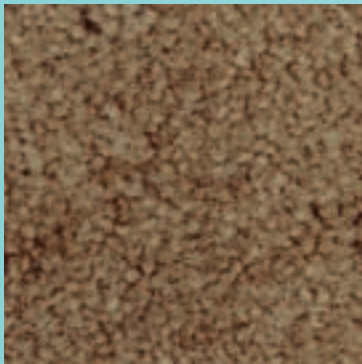
Spiral II

Fabrics & Carpet Samples

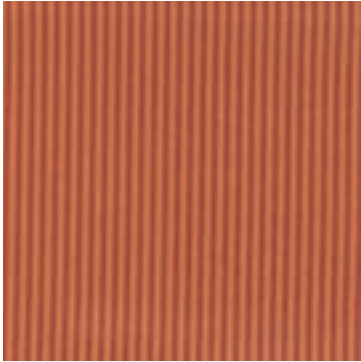
Color Scheme # 1



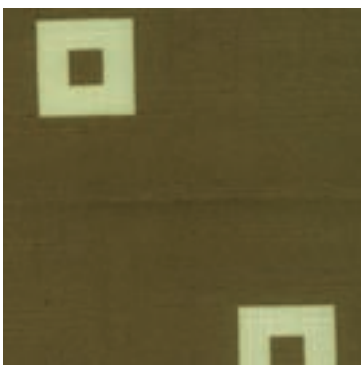
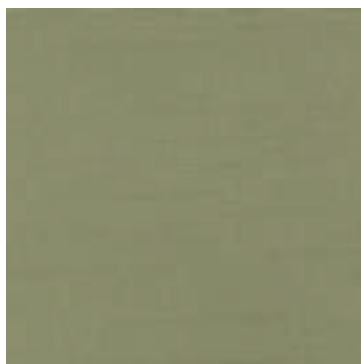
Color Scheme # 2



Color Scheme # 3



Color Scheme # 4



Rejuvenating Mattresses



Imagine a mattress that has the power to rejuvenate, a mattress full of the latest features and benefits, a sleep system designed for today's active lifestyle. With our mattresses, you'll not only enjoy a good night's sleep in pure elegance, but overall better health as well.



1000 Sawgrass Corporate Parkway, Suite 452 | Sunrise, FL 33323 | www.capitolsupply.com
Toll Free 888.485.5001 | Int'l 954.485.5000 | Fax 954.485.0407 | sales@capitolsupply.com



Power Edge™ Zoned Support System

High speed machinery forms geometrically firmer coils that are automatically placed around the perimeter of the unit to increase edge support by 20% for firmer seating.



Advanced Lura-Flex Alternating Coil System

Each coil flexes independently for greater sensitivity to body contours and more durability with less friction.



High Density Foam Layers

Contains the highest quality specialized foam products rated above industry standards. The high density foam layers are not only more resilient but also afford a higher level of support and conformability.



Quality Fabrics

The elegant woven damasks used to create our Hospitality Collection of beds are of superior quality and are designed to enhance comfort.



Chemical Free, "Natural" Fire Resistance

International Bedding's Hospitality Collection consists of a chemical free "natural" fire barrier:

- Inherent fire resistant fibers make it permanently flame retardant
- Does not cause skin sensitization or irritant reactions
- Biodegradable
- Moisture regulating properties provide comfort
- Meets or exceeds 15 international standards



CF1805978
Classic Suite Plush Mattress

Classic Suite Plush

Available Sizes:
Twin, Twin XL, Full, Full XL,
Queen & King

CF1808432
Box Spring

Features and Benefits

Power Edge™ Zoned Support System

The Classic Suite features the Power Edge Zoned Bonnell Innerspring system. High speed machinery forms geometrically firmer coils that are automatically placed around the perimeter of the unit to increase edge support by 20% for firmer seating. Coil counts for this mattress:

- 260 coils in Twin 280 coils in Twin-XL
- 364 coils in Full 392 coils in Full - XL
- 448 coils in Queen
- 580 coils in King

*All are 13 gauge coils with 6 gauge borders.

Premium Comfort Materials

The Classic Suite sleep system contains the highest quality specialized foam products that are rated above industry standards. The high density foam layers are not only more resilient but also afford a higher level of support and conformability.

Luxury Resort Pillow Top



CF1805981
Luxury Resort Pillow
Top Mattress

Available Sizes:
Twin, Twin XL, Full, Full
XL, Queen & King

CF1808432
Box Spring

Features and Benefits

Lura-Flex Alternating Coil Support System

The Luxury Resort features the high profile, 5 zoned Lura-Flex alternating spring support system with foam encased rails. Each coil flexes independently for greater sensitivity to body contours and more durability with less friction.

Coil counts for this unit are as follows:

- 660 coils in Full
- 800 coils in Queen
- 1024 coils in King

Premium Comfort Materials

The Luxury Resort sleep system contains the highest quality specialized foam products that are rated above industry standards. The high density foam layers are not only more resilient but also afford a higher level of support and conformability.



Serenity Suite No Flip

CF1806214
Serenity Suite No Flip
Mattress

Available Sizes:
Twin, Twin XL, Full, Full
XL, Queen & King

CF1808432
Box Spring

Features and Benefits

Lura-Flex Alternating Coil Support System

The Serenity Suite features the high profile Lura-Flex offset spring support system with foam encased rails. Each coil flexes independently for greater sensitivity to body contours and more durability with less friction.

Coil counts for this unit are as follows:

- 528 coils in Full
- 651 coils in Queen
- 837 coils in King

Premium Comfort Materials

The Serenity Suite sleep system contains the highest quality specialized foam products that are rated above industry standards. The high density foam layers are not only more resilient but also afford a higher level of support and conformability.

Lodging & Hospitality Furniture



La-Z-Boy Recliners



Major Appliances



1000 Sawgrass Corporate Parkway, Suite 452 | Sunrise, FL 33323 | www.capitolsupply.com
Toll Free 888.485.5001 | Int'l 954.485.5000 | Fax 954.485.0407 | sales@capitolsupply.com